

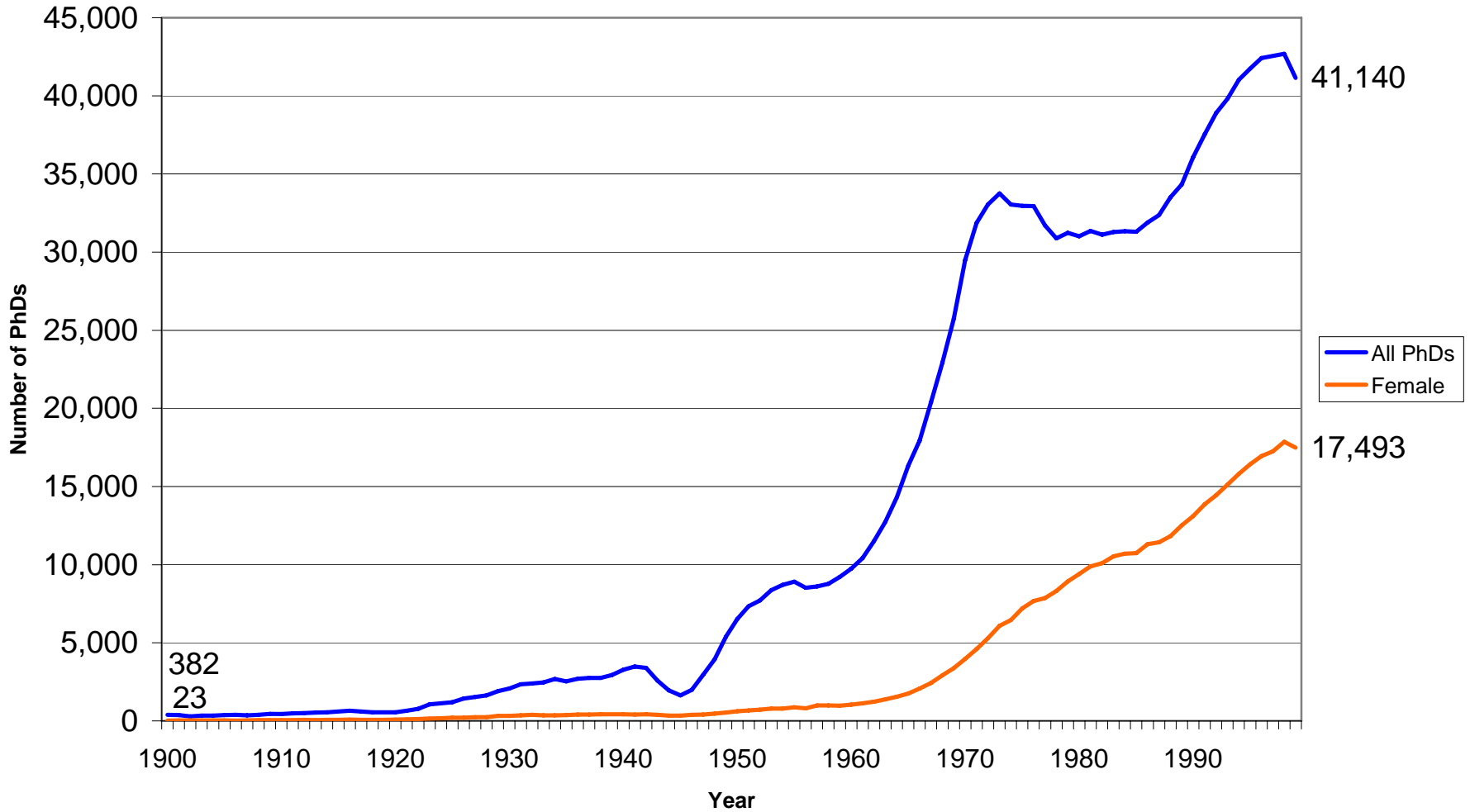
The PhD in the U.S.

PhD students are students enrolled in university programs

	Science Model	Humanities Model
Research Mode	Apprenticeship, Teamwork	“Lonely scholar”
Program Structure	Course work Qualifying exam (includes dissertation proposal)	Course work M.A./M.S. often required, Qualifying exam is BEFORE Dissertation proposal
Dissertation Definition	Tests future ability for research	Major contribution to knowledge (book)
Advising	Often work in advisor’s lab, research topic fits there	Student recruits dissertation chair & committee, defines own research topic
Financial Support	Research assistant	Teaching
Job Market	Industry & academic	Primarily academic
Postdoc	Common	Uncommon

Source: Adapted from Nerad and Cerny, 1991, *CGS Communicator*

U.S. PhDs Awarded 1900-1999



Source: Thurgood, Golladay, and Hill, 2006, *US Doctorates in the 20th Century*

PhD Financial Situation (2005)

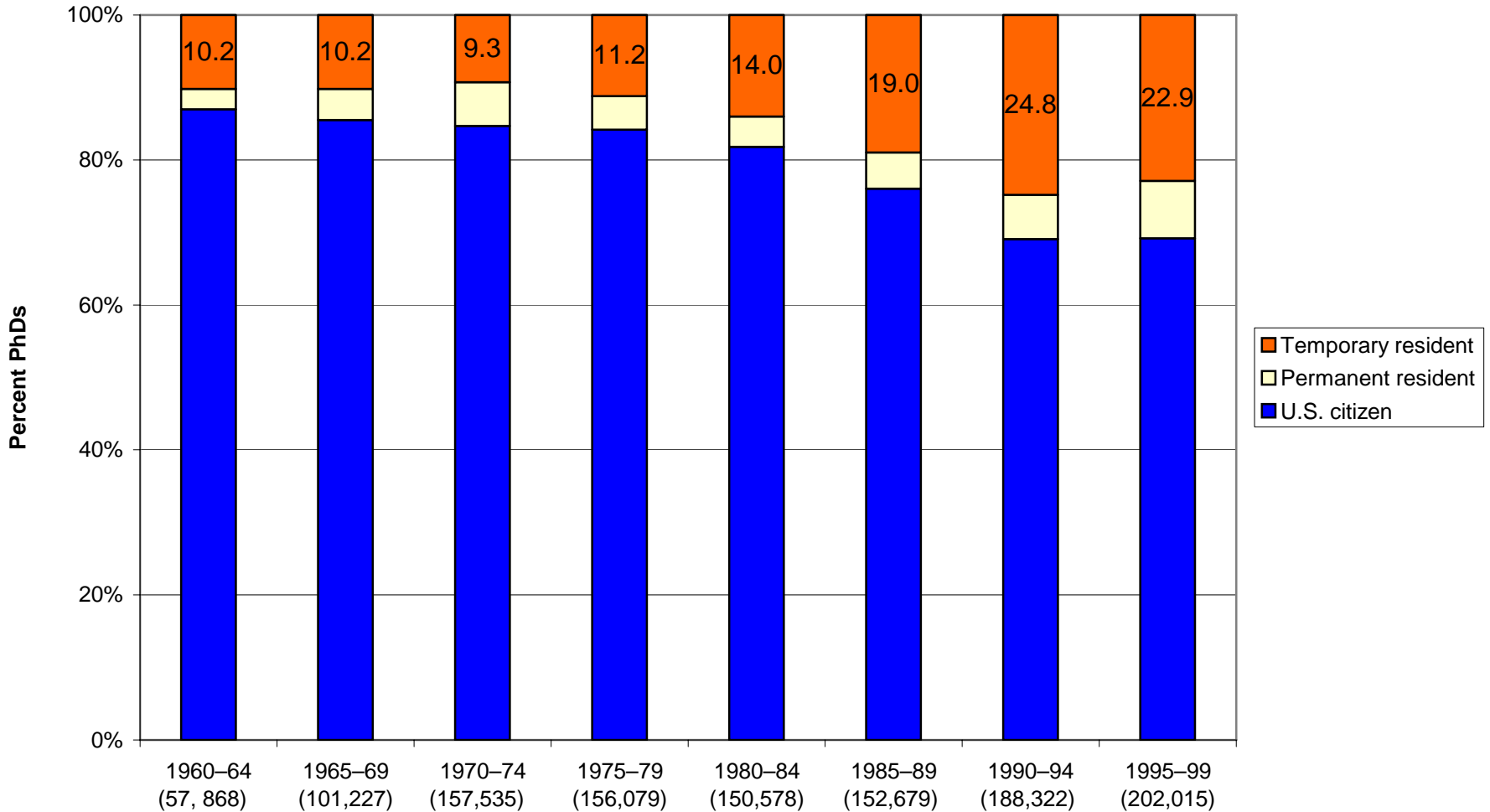
Source: Hoffer et al. *Doctorate Recipients from United States Universities Summary Report 2005*



Primary source of support “Own Resources”	22.7%
Any education-related debt (cumulative, includes undergraduate years)	48.6%
Average debt	\$15,181
More than \$50,000 debt	12.2%
<i>in social sciences</i>	21.6%
<i>in physical sciences</i>	5.7%

Center for Innovation and Research in Graduate Education (CIRGE), College of Education & Graduate School, University of Washington, Seattle, <http://depts.washington.edu/coe/cirge/>

Proportion U.S. Citizens Among PhDs 1960-1999

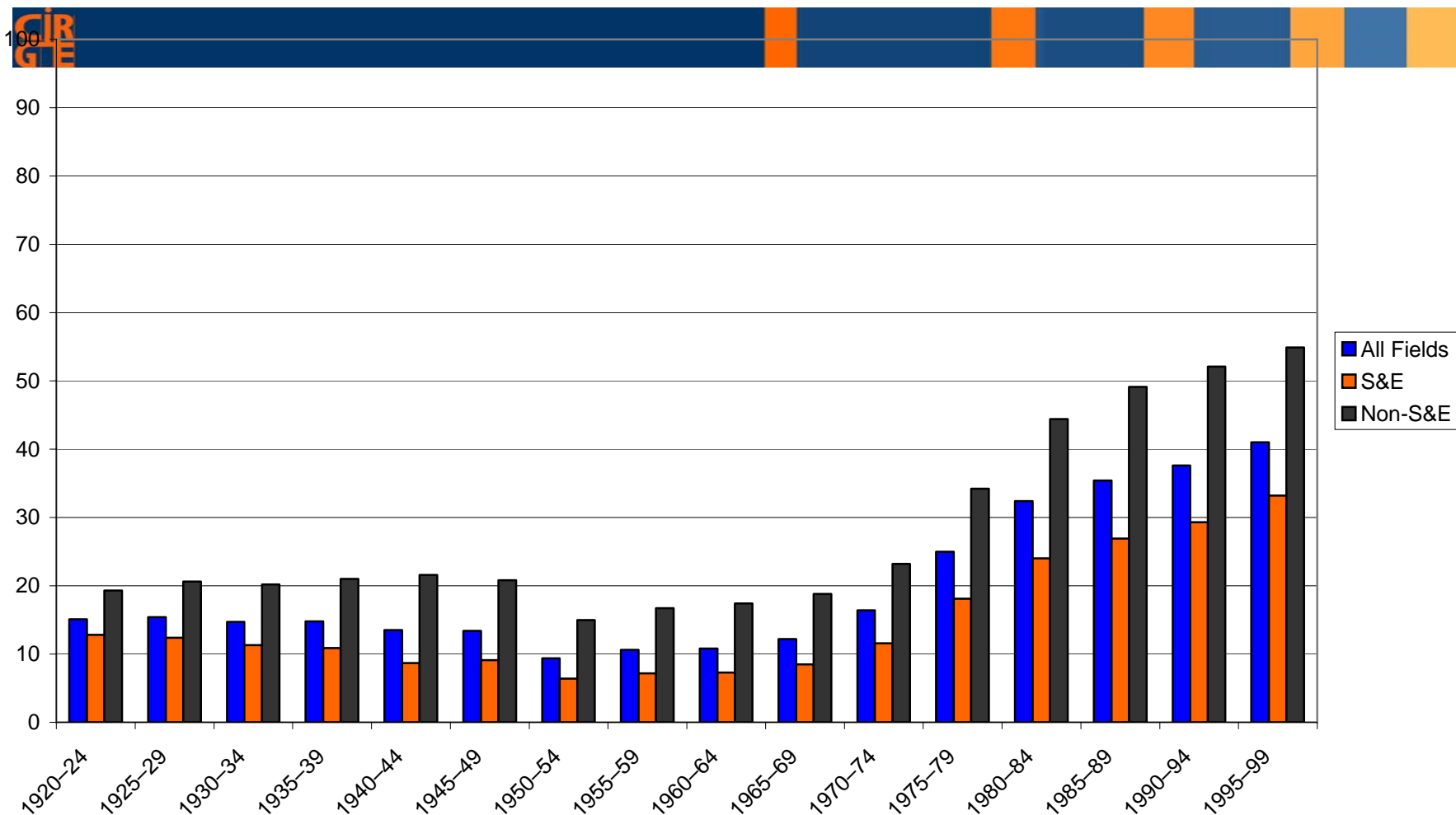


Year (number of PhDs with known citizenship)

Source: Thurgood, Golladay, and Hill, 2006, US Doctorates in the 20th Century

Proportion Women PhDs 1920-1999 in Science & Engineering vs. Other Fields

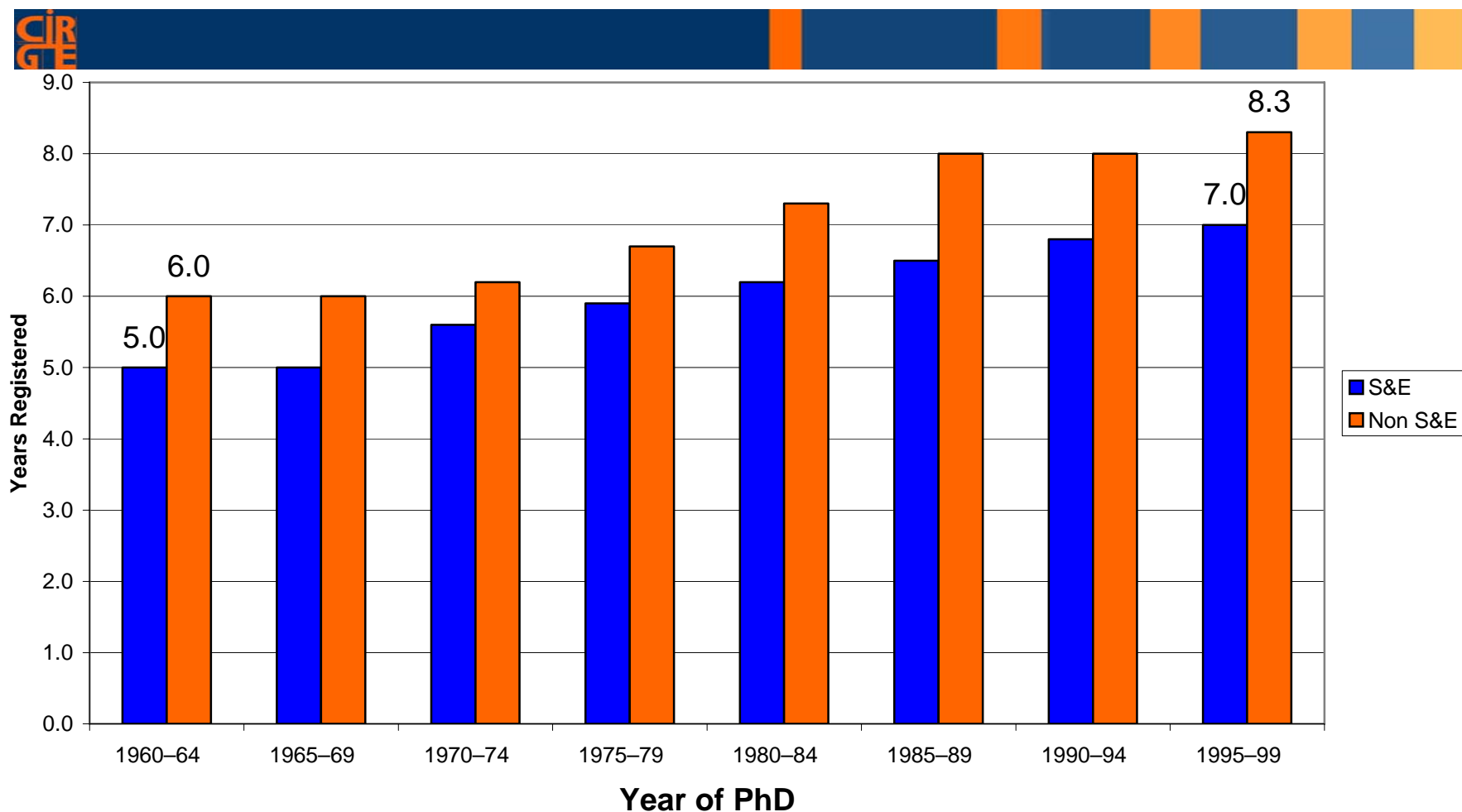
Source: Thurgood, Golladay, and Hill, 2006, *US Doctorates in the 20th Century*



Center for Innovation and Research in Graduate Education (CIRGE), College of Education & Graduate School, University of Washington, Seattle, <http://depts.washington.edu/coe/cirge/>

U.S. Doctorates

Median Registered Time to Degree 1960-1999



Source: Thurgood, Golladay, and Hill, 2006, *US Doctorates in the 20th Century*

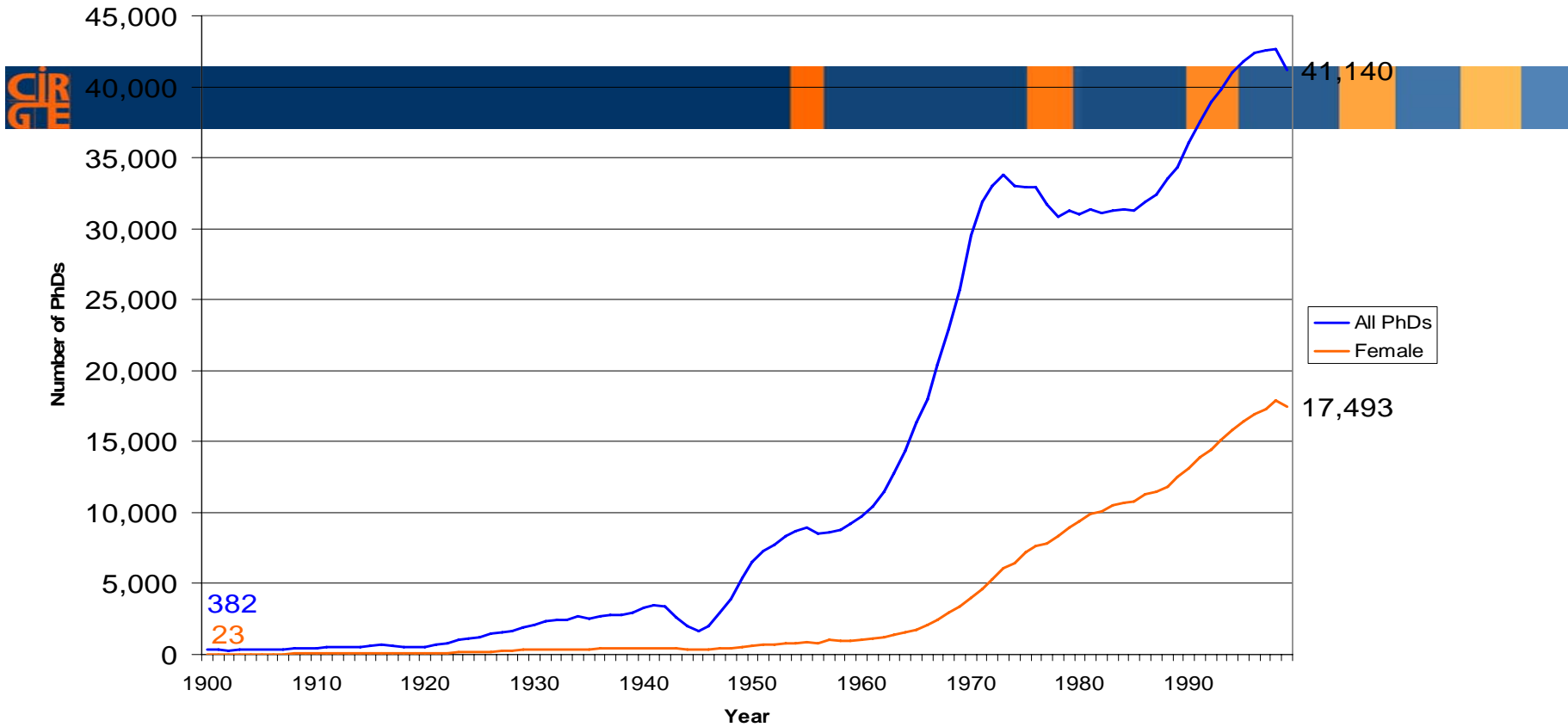
Center for Innovation and Research in Graduate Education (CIRGE), College of Education & Graduate School, University of Washington, Seattle, <http://depts.washington.edu/coe/cirge/>

Some current topics of concern



- Outcomes-based assessment
- Student-centered evaluation
 - Completion rates, job placement, quality of advising
- Are PhDs trained for the jobs they actually do?
- Do PhD students get enough career guidance?
- Interdisciplinary PhDs
- Internationalization/globalization
 - What does it mean for skills needed, quality assurance?
 - What happens when higher education is part of the WTO's General Agreement on Trade in Services?

U.S. PhDs Awarded 1900-1999



Source: Thurgood, Golladay, and Hill, 2006, *US Doctorates in the 20th Century*